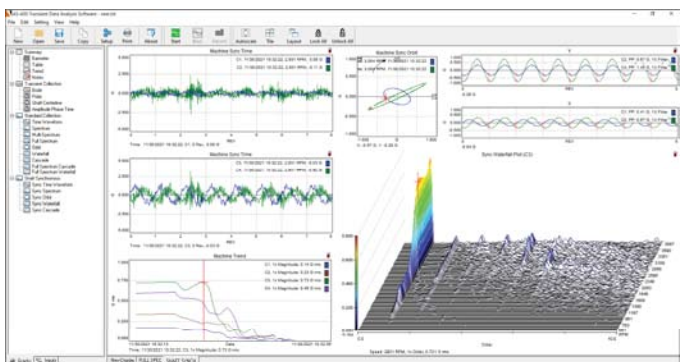
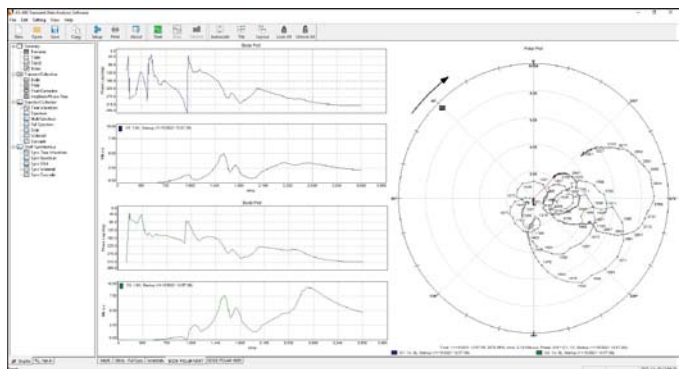
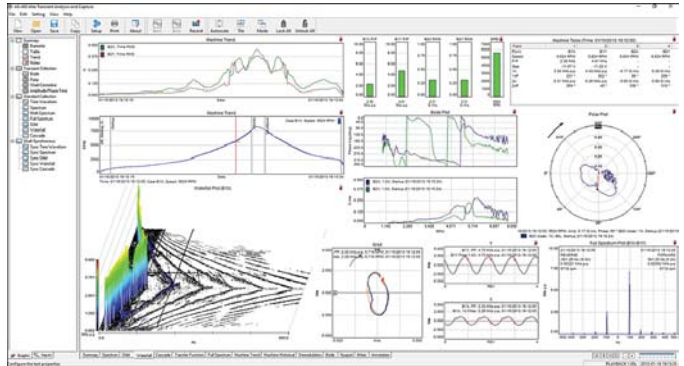


AS-400 LIGHTSPEED

TRANSIENT DATA ANALYSIS SOFTWARE

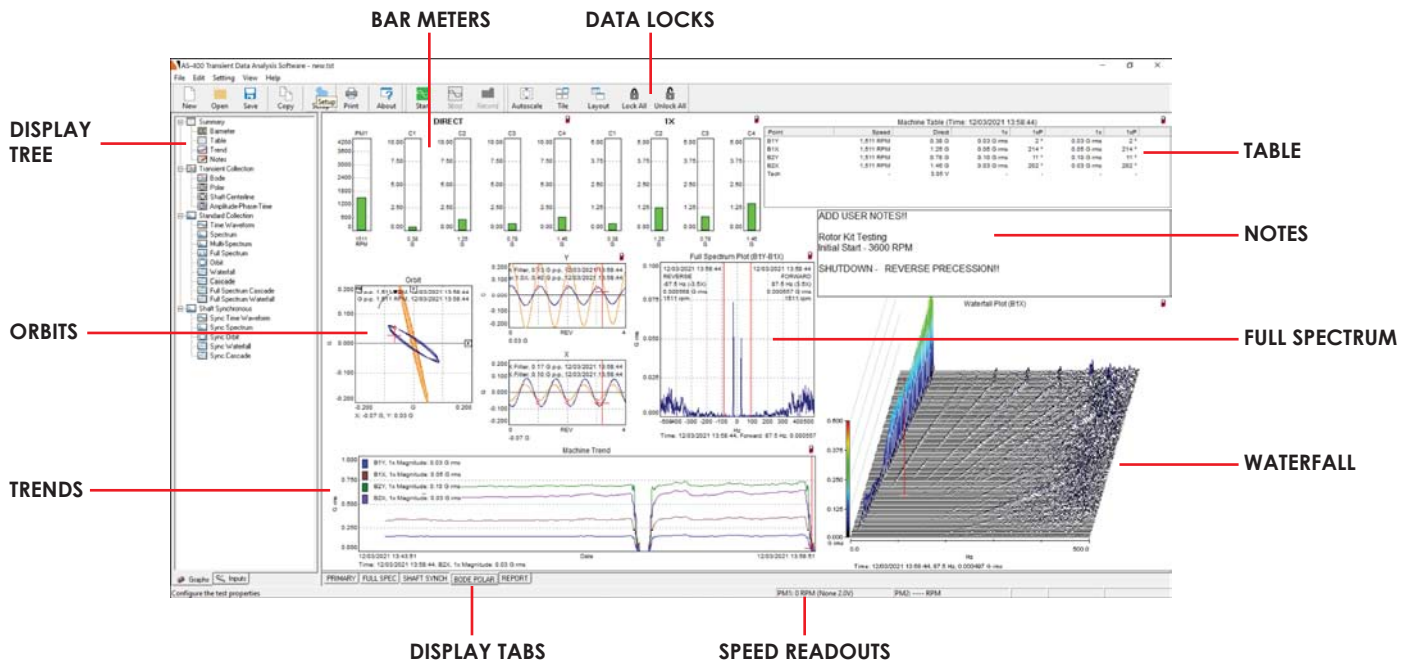


AS-400 LIGHTSPEED

TRANSIENT DATA ANALYSIS SOFTWARE

INTUITIVE USER INTERFACE

Quickly navigate and visualize collected data. Easily open plots, change channels and modify settings by simply dragging and dropping the different screen elements.



EASY SOFTWARE SETUP

Setup in less than 5 minutes to capture transient data during Startup and Shutdown of a machine.

Channel and Speed Input Setup

The Channel and Speed Input Setup dialog box shows the configuration for data acquisition. It includes a table for Channel List and a table for Phase Marker/Speed List.

#	Active	Name	Type	mV/Hz	Sensor	Convert To	Offset	Clipping	Angle	PM	1stM	2ndM	Gap	HPF
1	Yes	ACCEL_X	Acceleration	100	G	G	0	IEPE	90L	PM1	-	-	-	-
2	Yes	ACCEL_Y	Acceleration	100	G	G	0	IEPE	0L	PM1	-	-	-	-
3	Yes	ACCEL_Z	Acceleration	100	G	G	0	IEPE	0L	PM1	-	-	-	-
4	Yes	VEL	Velocity	100	IPS	IPS	0	AL	0L	PM1	-	-	-	-
5	Yes	BTX	Displacement	200	Mils	Mils	0	DC	90L	PM1	1.20	34.0	-11.2V	-
6	Yes	BTY	Displacement	100	Mils	Mils	0	DC	0L	PM1	0.09	231.0	-11.0V	-
7	No	C7	Temperature	1000	F	Units	0	DC	0L	PM1	-	-	-	-
8	No	C8	Current	1000	A	Units	0	DC	0L	PM1	-	-	-	-

#	Name	Mode	Threshold	Slope	PPR	Clipping	Angle	Position
1	PM 1	Manual	11V	Falling (switch)	1	DC	90L	CCW
2	PM 2	Auto	0V	Falling (switch)	1	DC	0L	CW

Acquisition and Analysis Setup

The Acquisition and Analysis Setup dialog box shows the configuration for data acquisition and analysis. It includes sections for Standard Sampling, Synchronous Sampling, Machine Information, and Digital Recording (FIFO) Settings.

Standard Sampling:

- Frequency Span: 2000 Hz
- Sample Rate: 5120 SPS
- Spectral Lines: 1600
- Freq. Resolution: 1.25 Hz
- Time Resolution: 0.195313 ms
- Acquisition Time: 0.8 s
- Overlap %: 50%
- # of Averages: 1
- Window Type: Hanning

Synchronous Sampling:

- Samples Per Revolution: 120
- Sync Block Size: 2048
- Maximum Valid Speed: 15000 RPM

Machine Information:

- Name: JST102
- Description: [See Tutorial]
- Machine Information: [See Tutorial]
- Speed Source: Phase Marker
- Start Speed: 60 rpm
- Operating Speed: 6000 rpm

Digital Recording (FIFO) Settings:

- Pre-Trigger Samples: 0
- Post-Trigger Samples: 1638400
- 0.00 secs before, 300.00 secs after (61.440.512 bytes if all inputs are)

Collection Rules:

- Check Data Speed: 25 rpm
- Check Data Time: 10 Seconds
- Measurements per Waveform: 1

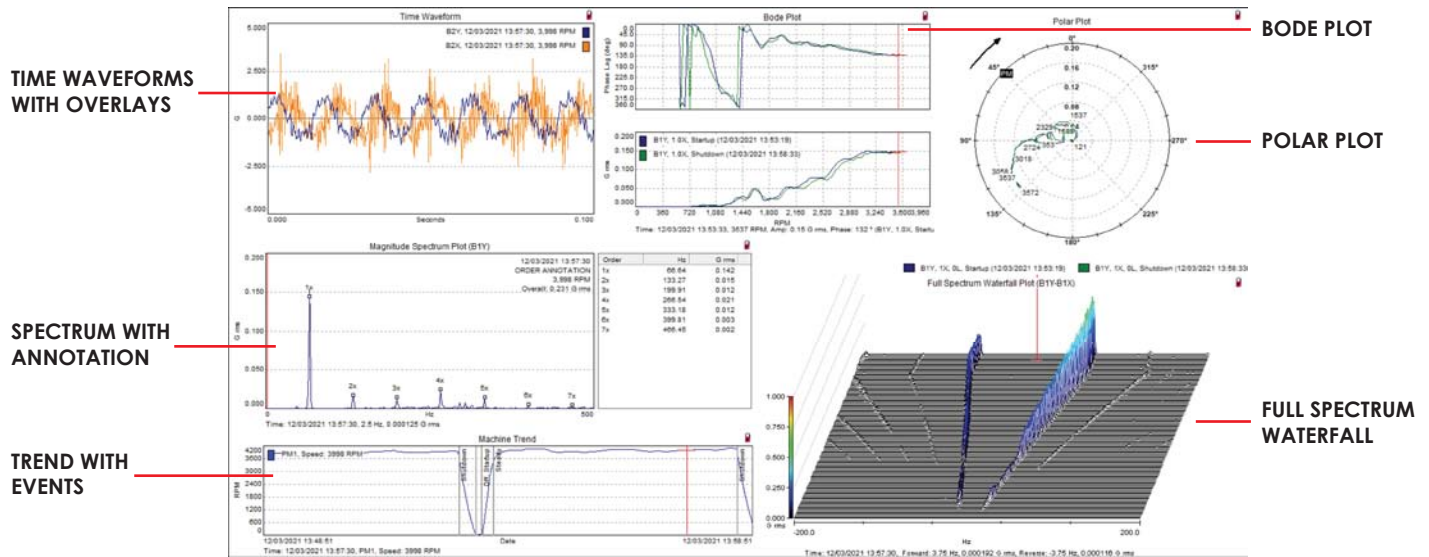
Data Direct:

Channel	Value	Units	Status
ACCEL_X	-	G	-
ACCEL_Y	-	G	-
ACCEL_Z	-	G	-
VEL	-	IPS	-
BTX	-	Mils	-
BTY	-	Mils	-
-	-	-	-
-	-	-	-

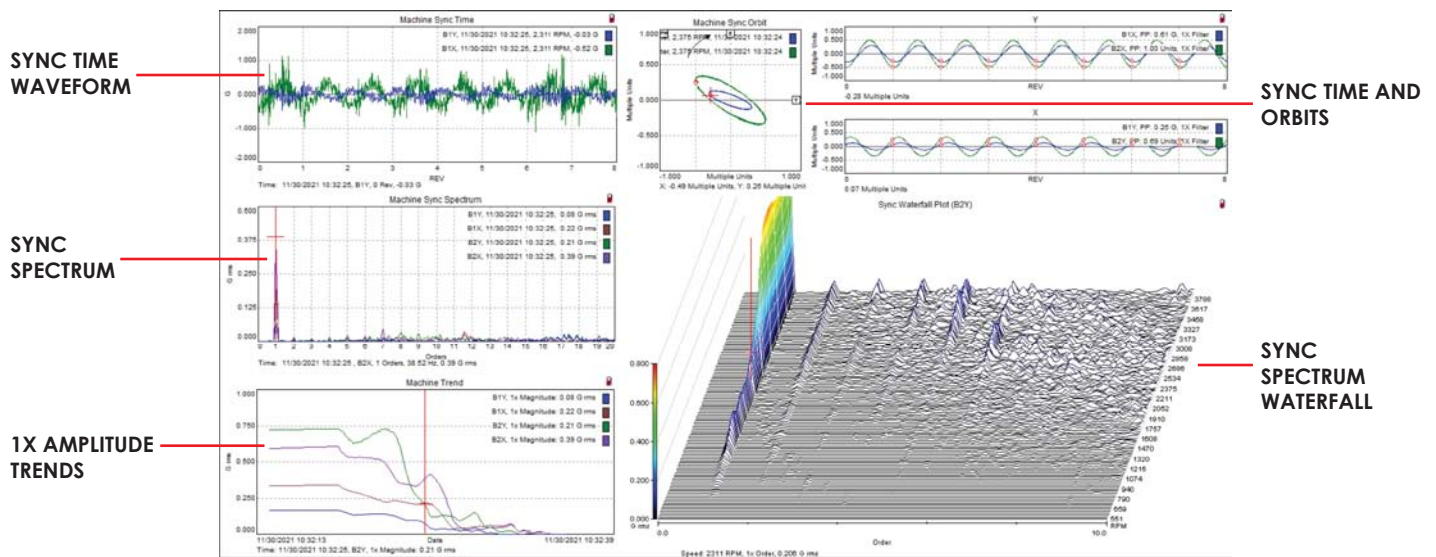
AS-400 LIGHTSPEED

TRANSIENT DATA ANALYSIS SOFTWARE

TRANSIENT PLOTS



SHAFT SYNCHRONOUS PLOTS



AS-400 LIGHTSPEED

TRANSIENT DATA ANALYSIS SOFTWARE

DATA ACQUISITION	
Sensor Types	Acceleration, Current, Displacement, Temperature, Speed, Velocity, Voltage
Data Capture	Asynchronous and Synchronous Sampling
Frequency Span	10, 20, 40, 50, 100, 200, 400, 500, 1000, 2000, 4000, 5000, 10000, and 20000
Speed Detection	Automatic and Manual Thresholds
DATA ANALYSIS	
Spectral Resolution	100, 200, 400, 800, 1600, 3200, 6400, and 12800
Overlap Processing	0%, 25%, 50%, 75%, and 90%
Window Types	Rectangular, Hamming, Hanning, Blackman-Harris, Flat-top, Exponential
Data Processing	Integration, Differentiation, Filtering, Averaging, Vector and Waveform Compensation
DATA COLLECTION	
Collection Rules	Delta Time, Delta Speed, Delta Direct
Measurement Types	Direct, Gap, Bias, Overall, Not 1X, Sub Sync, nX Magnitude, nX Phase, Energy Band, Speed
DATA VISUALIZATION	
Plot Types	Barmeter, Time Waveform, Orbit, Spectrum Magnitude, Full Spectrum, Bode, Polar, Shaft Centerline, Table, Amplitude-Phase Time, Trend, Waterfall, Cascade, Full Spectrum Waterfall, Notes, Sync Time, Sync Spectrum, Sync Waterfall, Sync Orbit, Sync Cascade
Navigation	Data Zooming, Autoscaling, Drag and Drop, Locking Cursors
Annotation Types	Peak, Harmonic, Side-Band, Order, Delta Time, and User Defined

Contact Alta Solutions for the latest specifications and ordering information.



Alta Solutions Incorporated
12580 Stowe Drive, Poway, CA 92064 USA
Phone: (858) 668-5200
Email: sales@altasol.com, Web Site: www.altasol.com



MADE IN THE USA